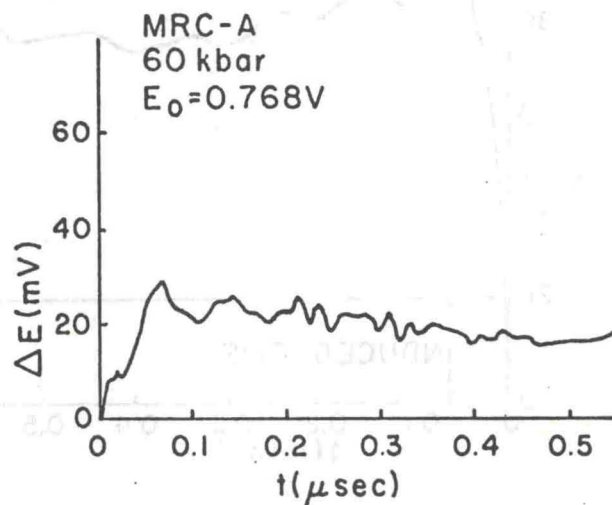
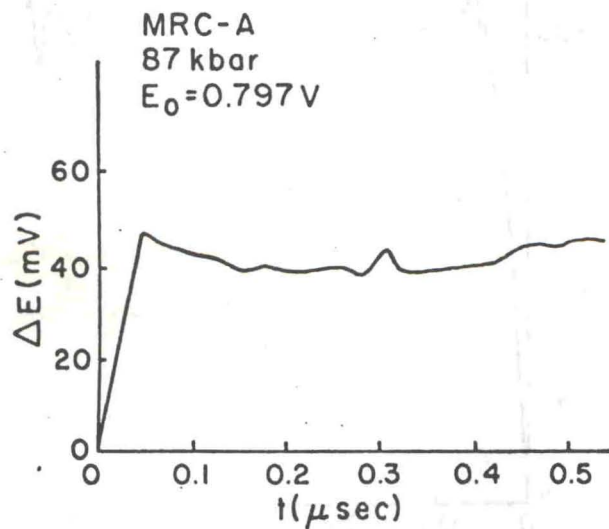


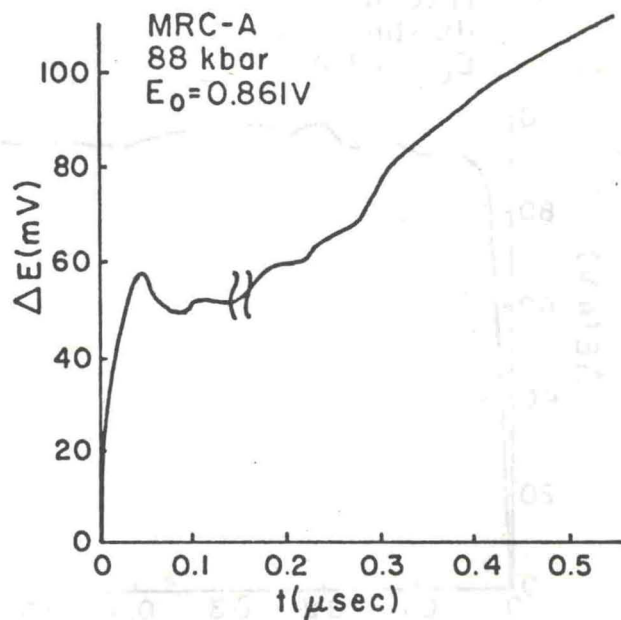
(g) 73-013



(h) 73-011

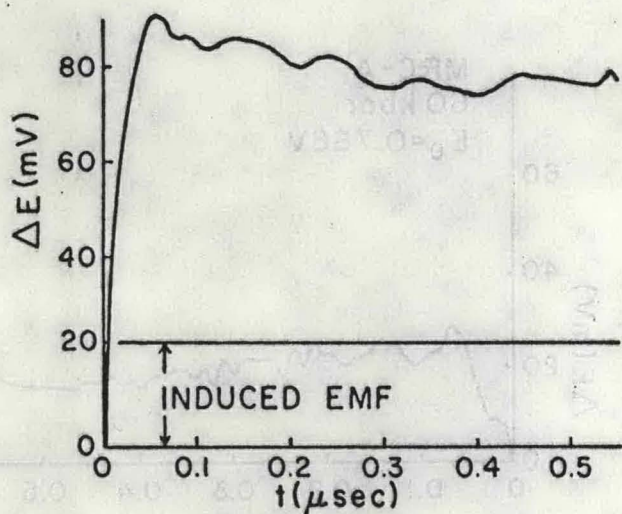


(i) 73-009



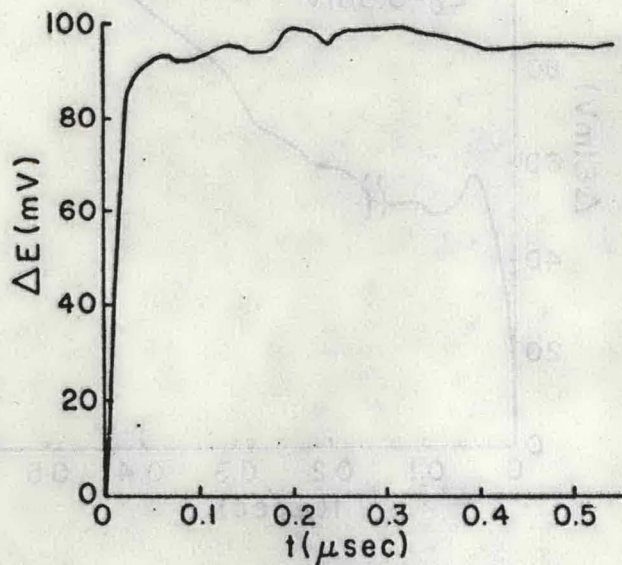
(j) 73-010

MRC-A
104 kbar
 $E_0 = 0.713V$



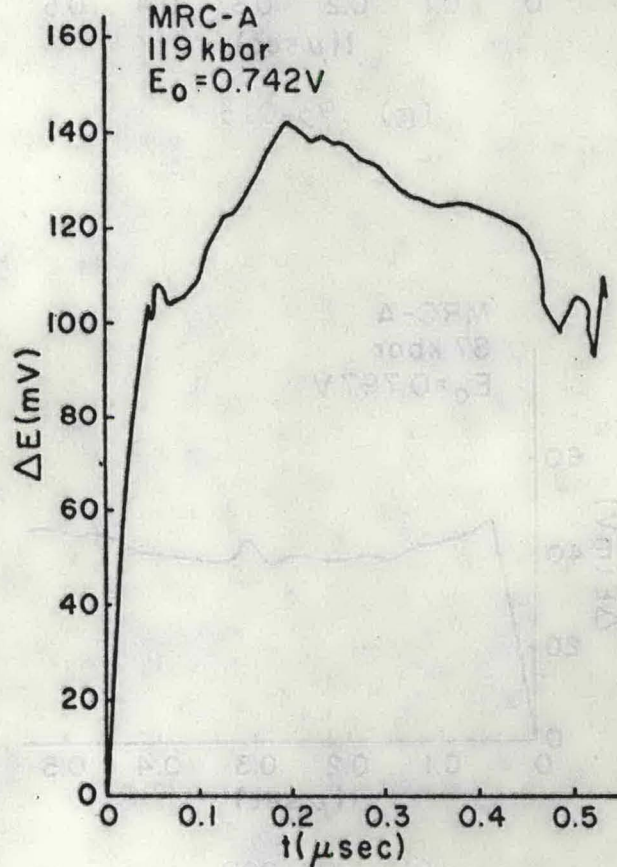
(k) 72-069

MRC-A
116 kbar
 $E_0 = 0.839V$



(l) 73-027

MRC-A
119 kbar
 $E_0 = 0.742V$



(m) 73-059